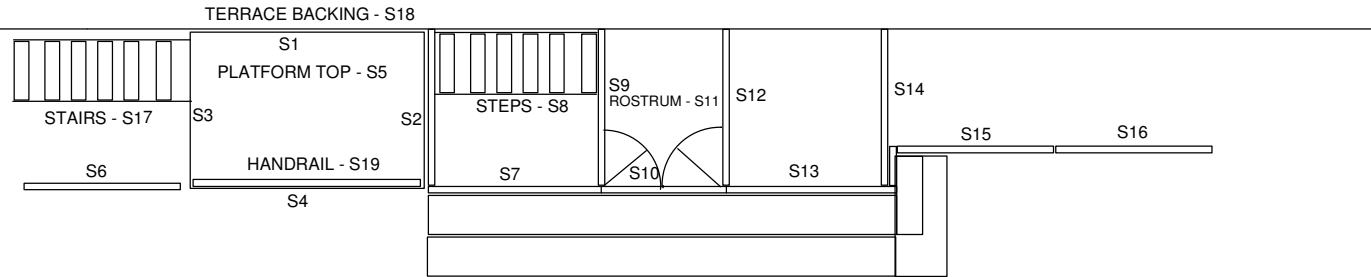
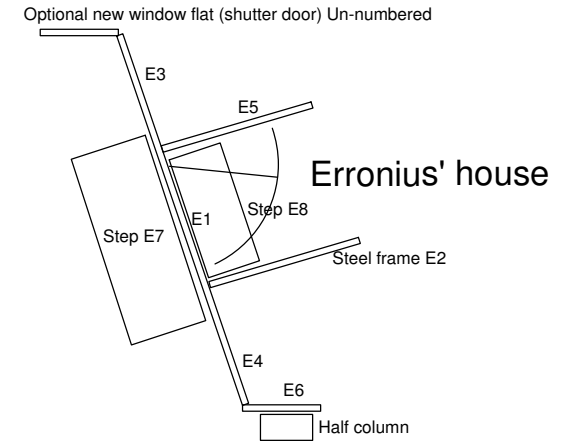
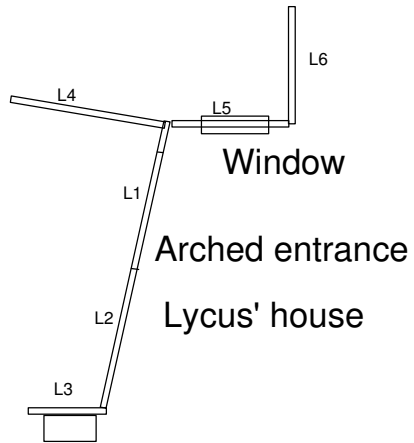


FORUM STAGE PLAN

Theatre Back Wall



Senex's house



Auditorium

FORUM INSTRUCTION MANUAL

These notes are for guidance only. It is the ultimate responsibility of the person/s that the scenery is being hired to, to ensure that it is erected and operated in a safe manner with due regard to current legislation.

All flats are marked with an identity number which is referenced on the stage plan. Senex's house flats are prefixed by S, Erronious' by E & Lycus' by L.

Start by bolting S1 to S2 as shown



Then bolt S3 to the other side of S1



Complete the Roof Terrace Base by bolting on the front S4.



Slide on platform top S5 & secure.



Bolt on S6 to S/R of Terrace



Bolt S7 to S/L of Terrace



FORUM INSTRUCTION MANUAL

Bolt on steel frame S9 then fit internal steps S8 as shown securing with bolt



Fix door flat S10 utilising the attached ply plates & wood screws (see below)



Ply plates & screws are used to join flats together. The plates should be already screwed to one flat. Just butt the flats together & fix with 2 screws as shown. When striking set, only remove the 2 screws you have put in & leave plate attached the the original flat. Do not remove screws that have a ⊗

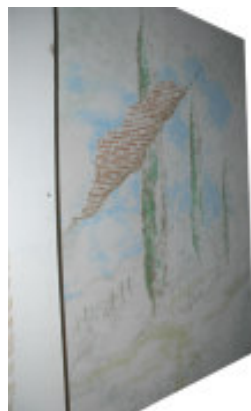
Using plates again, fix on S13 to S/L of door flat. Bolt on S12 (steel frame with 12" return flat attached. When striking set, leave return flat fixed to steel frame



Showing back of 12" return flat & method of securing flat S15 with ply plates.



Attach flat S16 using ply plates.



Put in place the 2 sections of the step & fix together with screws



FORUM INSTRUCTION MANUAL

Bolt on external steps S17.



Fix the column tops to the 4 columns with wood screws as shown ensuring the hole for the final fixing screw through the column & plate line up.



Stand columns in place & secure with final fixing screw



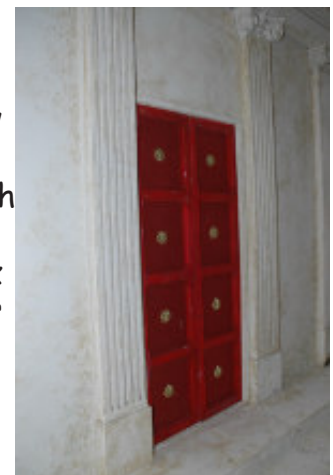
When all 4 columns are fixed, the pediment should be put into place & secured. There are 4 blocks of wood in the back of the pediment to take wood screws driven in from the back of the flats. Care should be taken when fixing pediment to avoid damage to the fragile column tops.



Screw the terrace backing S18 to the back of S2 & S3 by screwing through the steel frames. Then fix the columns & column tops with one screw to the backing



Finally screw the rail in place (through the steel frames) & fix doors. 2 door closers are provided.



FORUM INSTRUCTION MANUAL

Bolt steel frame E2 to door flat E1
Then fix E3 to upstage of E1 with ply plates



Fix E4 to downstage of E1 with ply plates



Screw backing flat E5 to the upstage architrave of E1



Screw flat E6 to downstage end of E4 & screw through E6 to secure half column. Put in place step E7 & E8

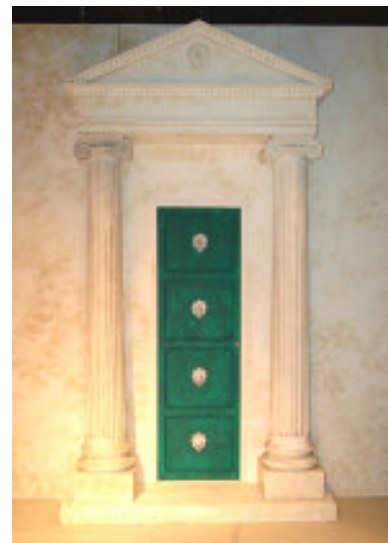


Columns are marked upstage & downstage. Each one has a bolt fitted in the base. During travel the bolts are reversed. For use, remove the bolts & fit so that they are protruding as shown.



Place the columns upright with the bolts locating in the holes in the step.

Lower the pediment onto the columns, locating the bolts protruding from the top of the columns into the holes in the pediment. Screw the pediment to E1 using the 3 holes & wood plates/washers provided.
Hinge pin the door in place



Lycus' house is straightforward to build, using split hinges & ply plates.